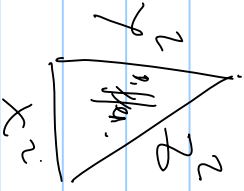
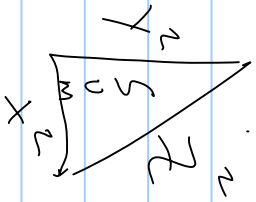


Pythagoras Quantum Mechanics

$$x^2 + y^2 = z^2$$

$$E = mc^2$$

Big Bang



VACUUM M. S.

C = constant

NON-N. THUS.

mind of god

N

$\Sigma = \text{Sum}$

$\Delta = \text{MINUS}$

SQUARE

ALWAYS B & COOL

~~N~~
~~N~~
~~N~~
N

SUM THINGS ARE BUILT TO

LAST

EXISTENCE
STRUCTURE
GROWING
EVIDENCE

DKA
NEXT TOO
Benevolent is everything.

QUESTION?

$$1 + 2 + 3 + 4 = 10$$

$$1113 + 1113 = 2226$$